



Contextual AI for Digital Behavioral Health

Problem

COVID-19 is fueling & accelerating a **Mental Health Crisis** for the world's youth seriously affecting our future

Mental health in the U.S. declined in the past 20 years.
COVID-19 accelerated the process at scale.

A new national survey in young adults reveals "significant depressive symptoms" in 80% of participants.



1 in 4 people in 18-24 age bracket have seriously considered committing suicide at some point during the pandemic.



Reports of anxiety and depression have tripled during the pandemic.



This could cost the global economy up to 16 trillion by 2030 if problems are not addressed.

Solution

Contextual AI in Mental Health



Product #1: Group Reflection
AI-based mental health detection



Product #2: Reflection™ TeleAssistant
Augmenting ability to personalize treatment and therapeutic approach in real-time



Product #3: The Game Changer 'Lara'
AI-based lifelike companion avatar 24/7

Market Size

US data only - Megatrend



29,320 Institutions
35M students

Product #1: Group Reflection
Colleges, Universities, High Schools



1,230,000

Product #2: Reflection™ TeleAssistant
Therapists, Clinicians, Physicians, Coaches



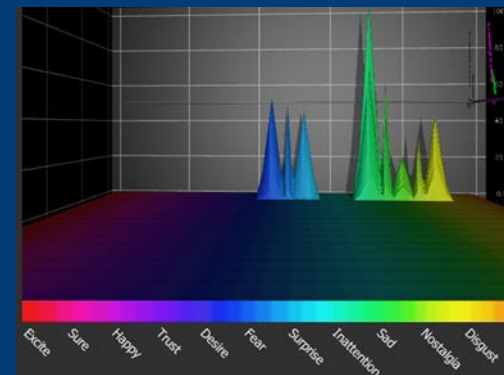
230,128,000

Product #3: The Game Changer 'Lara'
(I) Young Adults, (II) General Population

Product #1: Group Reflection

Group Reflection™ web app conducts anonymous assessment of mental health for teens and young adults

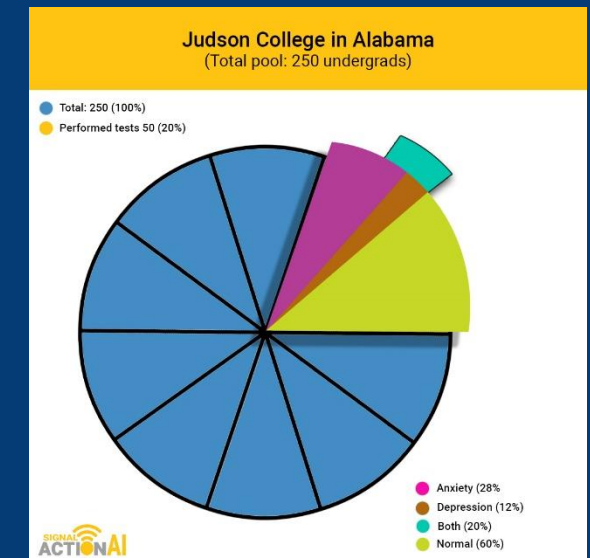
- Disorder classifiers using NLP/NLU Contextual AI
- Voice Tonal Micro-Feature Classifiers
- Emotional analysis of speech



Spoken Emotional Analysis

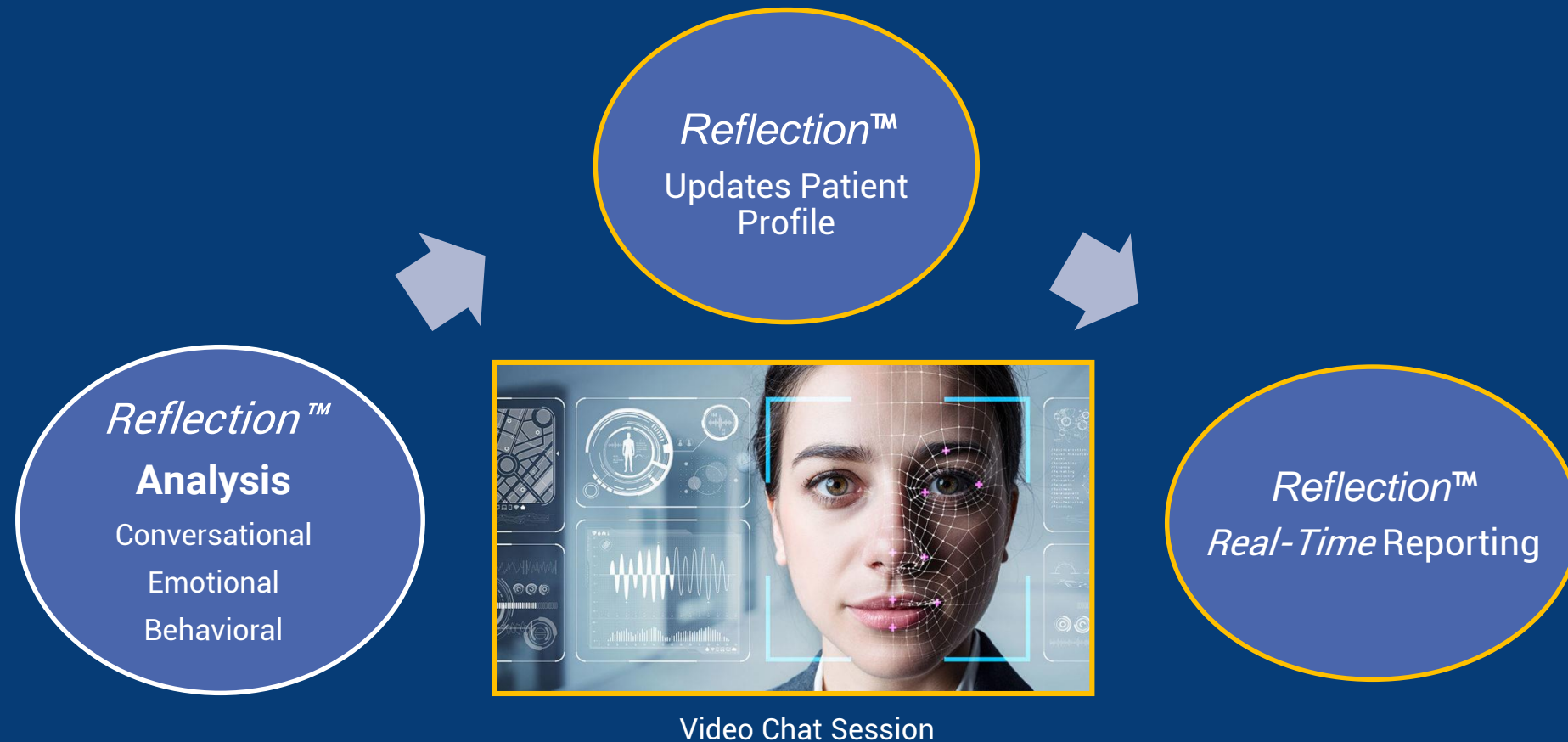
New Assessment Forms

- GAD-7 and other Standards
- Questions Addressing Youth and Social Media Issues
- Conversational Questions
E.g. "Describe to me ..."



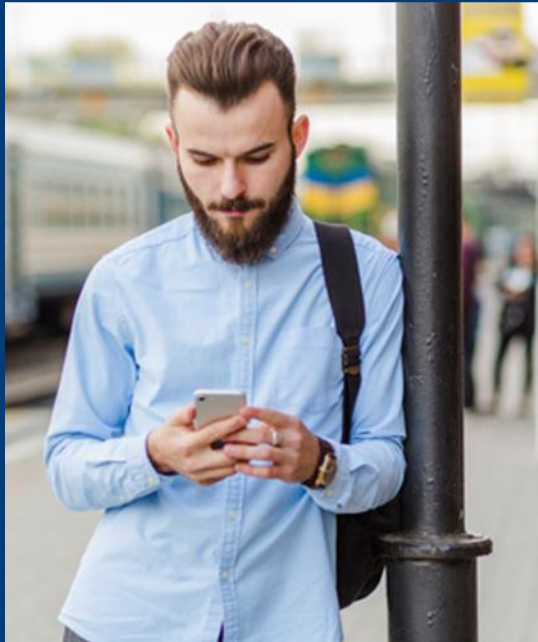
Product #2: *Reflection*TM TeleAssistant

Reveals deeper insights for therapists, clinicians, physicians, coaches augmenting ability to personalize treatment



Product #3: *Self Reflection*™ the Game Changer

Lifelike avatar with real-time analysis of emotional states to better address mental health well-being



It's been a few weeks, how have things been going with your new boss?

Work is okay, not sure I just got put on another project which I'm not crazy about. I'm worried the project won't go well and my boss is always in meetings.

I'm sensing a little fear and anxiety. Can you tell me more about your concerns?

Lara

Reflection™



Competitive Advantage



Perfect Timing



Competitive Cost Cap



Product Validation with
Vanderbilt University



Strong Partnerships



First to Market

Commercial Multimodal Approach



Exponential Growth
Potential

Team



Steve Ardire
CEO / Co-Founder
<https://www.linkedin.com/in/sardire/>



Cristina Imre
COO/CMO/CSO / Co-Founder
<https://www.linkedin.com/in/cristinaimre/>



Adam Hocek
CTO/ Co-Founder
<https://www.linkedin.com/in/adamhocek>



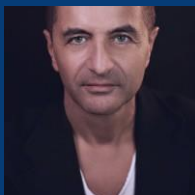
Surbhi Rathore
Co-founder @ Symbal.ai
<https://www.linkedin.com/in/surbhi-rathore/>



Anthony Chang
MD, MBA, MPH, Founder <https://ai-med.io/> and
<https://mi10.ai/>
<https://www.linkedin.com/in/anthonychangmd/>



Irina Pérez
Clinical & Counseling Psychologist |
Neuropsychologist | Digital Mental Health Nerd
| Neuroscience Freak
<https://www.linkedin.com/in/irina-neuropsychologist-ehealth>



Patrick Levy-Rosenthal
CEO/founder Emoshape Inc. Architect of
Emotion Chip
<https://www.linkedin.com/in/plrosenthal/>



Yev Muchnik
Impact Lawyer; Legal and Tech Futurist;
Micro-investor
<https://www.linkedin.com/in/yevmuchnik/>



Sharon Carothers
Managing Director at Sensis MSW, MPH
<https://www.linkedin.com/in/sharon-carothers-530a451/>



Reem Daghman
COO <https://lemapp.tech>
<https://www.linkedin.com/in/reemdghmn/>



Andrea Miller
Patient Experience + Digital Health Strategist Advisor
www.linkedin.com/in/andreamiller/



Martha Gaie
PhD, RN
<https://www.linkedin.com/in/marthagaie/>